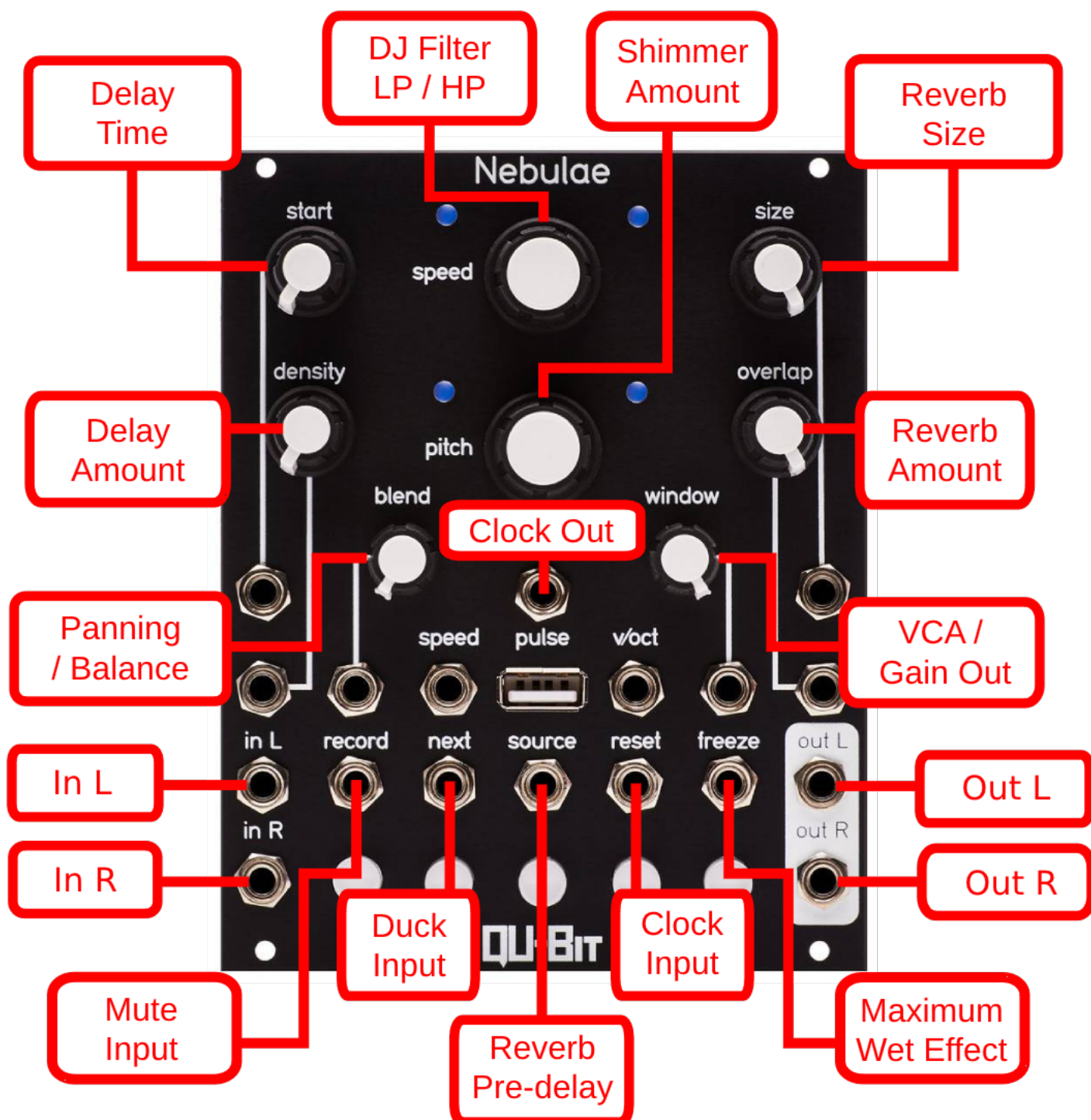


Mars Affects

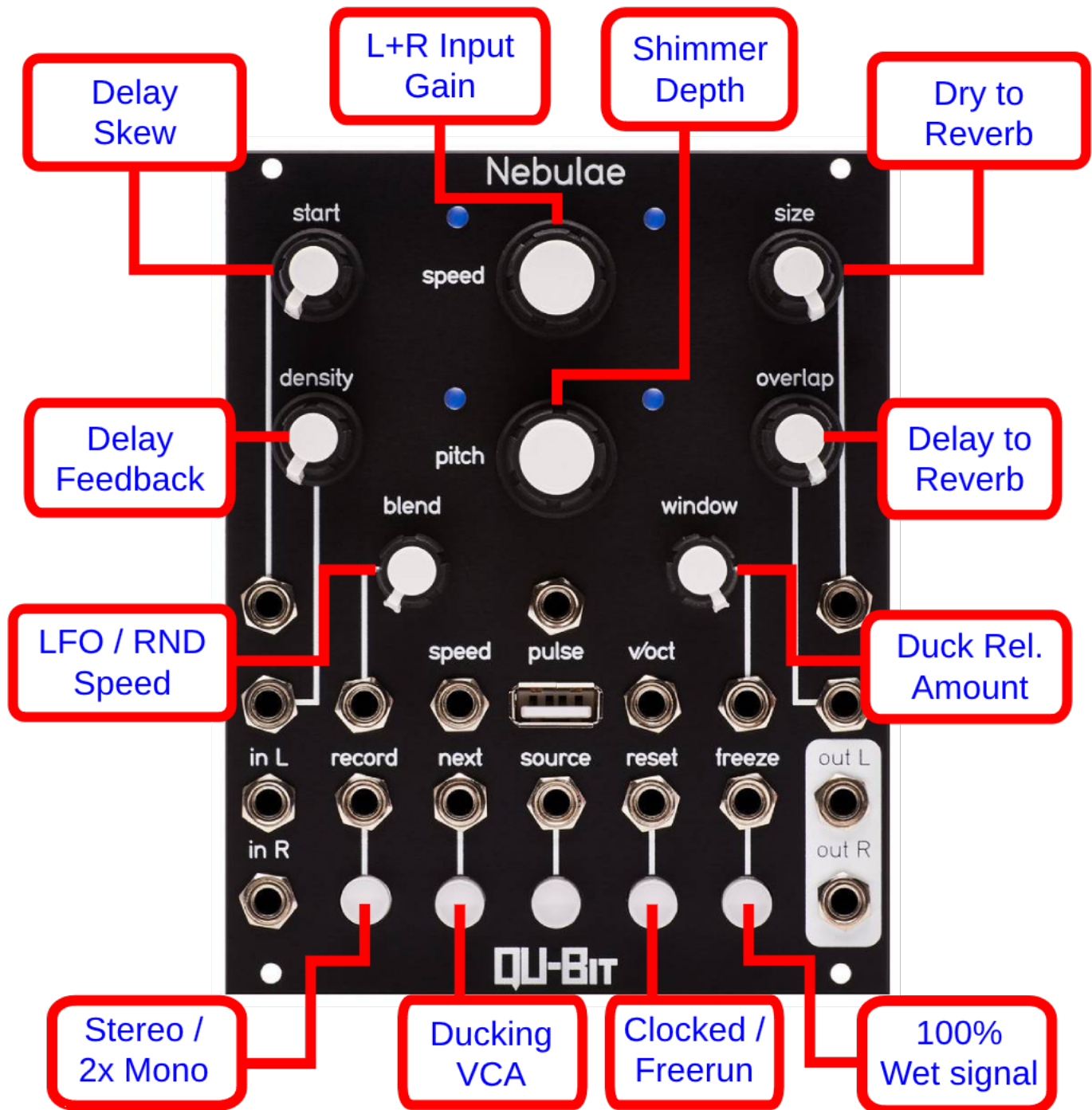
Stereo Delay and Shimmer Reverb (v1.5)
For QuBit Nebulae v.2 - By Ian Hoozeboom



Reverb & Two Delay lines which can be Skewed independently to create a Stereo Delay. Speed: DJ Style LP/HP Korg35 filter. Reset: Input clock or Tap button for clocked delays. Start: When Clocked = divisions and multiples, when Freerun = Karplus to 3 seconds. Density: set the Delay Amount. Blend: Input Panning. Pulse: Internal Clock Out. Reverb can be enriched with Shimmer effect, from subtle to spooky. Source: Pre-Delay. Pitch: CCW for Random Shimmer; CW for LFO Shimmer Amount; 12h is normal Reverb. Size and Overlap: set the Reverb Size and Amount. Freeze: Maximum Wet Effect. File: Ducking Input on Dry and Wet. Window: VCA input; CW is closed; CCW fully open.

Mars Affects

Stereo Delay and Shimmer Reverb (v1.5)
For QuBit Nebulae v.2 - By Ian Hoozeboom



Start secondary: set the Delay Skew; CCW = no Skewing.

Density secondary: set the Delay Feedback amount. Window: Ducking Release amount.

Pitch secondary: set the Reverb Shimmer depth; CW = LFO, CCW = Random effect.

Size And Overlap secondary: set the Dry and Delay to Reverb amount.

Speed secondary: set Boost Gain; Blend secondary: set the effect LFO speed amount.

Record secondary: Stereo / 2x Mono. When 2x Mono, VCA and Filter only on Left signal.

Reset secondary: Clocked (Reset = Clock In) or Freerun (Start = Clock) Delay Time.

File secondary: Ducking VCA. Freeze secondary: Output contains Wet signal only.